



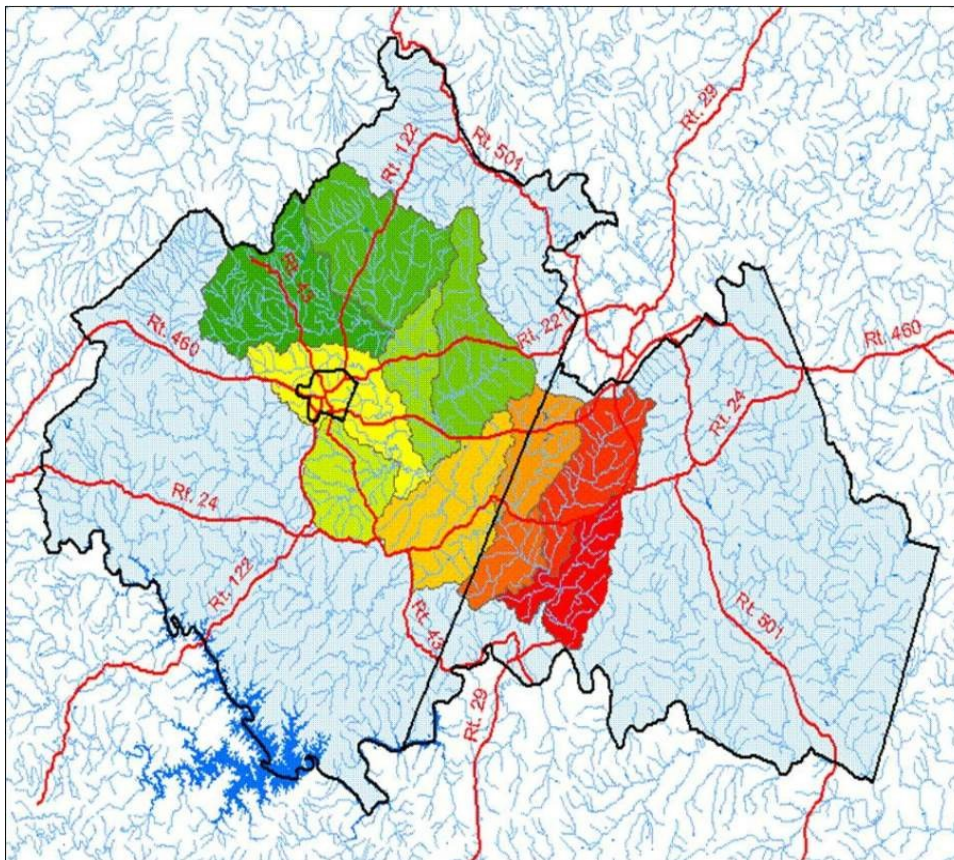
Big Otter River TMDL Cost-Share Program

The Big Otter River has been listed as an impaired waterway in Virginia. The cause of the impairment is the presence of too much fecal coliform bacteria. The bacteria is sourced from three areas: humans, agriculture animals and wildlife. The goal of the program is to reduce levels of bacteria from agricultural animals and humans entering waterways within the Big Otter River watershed. Though the watershed spans two counties, the Peaks of Otter SWCD administers this program for Bedford City and both Bedford and Campbell Counties.

TMDL stands for Total Maximum Daily Load, or the upper limit of pollutants a waterway can receive and still meet the criteria of being suitable for contact recreation by humans. Funding for this program began in 2006 and will be available through the end of 2011. Support for this program is provided through a grant with the Virginia Department of Conservation and Recreation, with funding provided by the US Environmental Protection Agency and the Commonwealth of Virginia.

Program Eligibility

In order to participate in the Big Otter River TMDL Program, an applicant's property must be located within the watershed and have a current water quality concern that can be address through the program. Agricultural applicants must meet the requirements of eligibility as outlined within the [Virginia Agricultural Cost-Share Program Manual](#).



Big Otter River Watershed in green, yellow, orange, and red.

Program Guidelines

All agricultural cost-share practices available through the Big Otter River TMDL program are to remove livestock from waterways and to establish pasture management through rotational grazing. Through this program, stream fencing, interior cross fencing, livestock drinking water development, stream crossings, and tree buffer plantings are available as cost-shareable practices to address livestock producers water quality concerns.

- With a 35 ft exclusion fence setback requirement, 85% cost-share is available for structural practices
- With a 10 ft exclusion fence setback requirement, 50% cost-share is available for structural practices
- Up to \$700 per acre is available for planting hardwood forest buffers

Application Process

- Contact the District to see if your property is located within the BOR TMDL Watershed.
- Contact your local Health Department to obtain a permit for work to be completed
- Sign the State Cost-share application at the District Office

The state application must be signed prior to construction beginning

